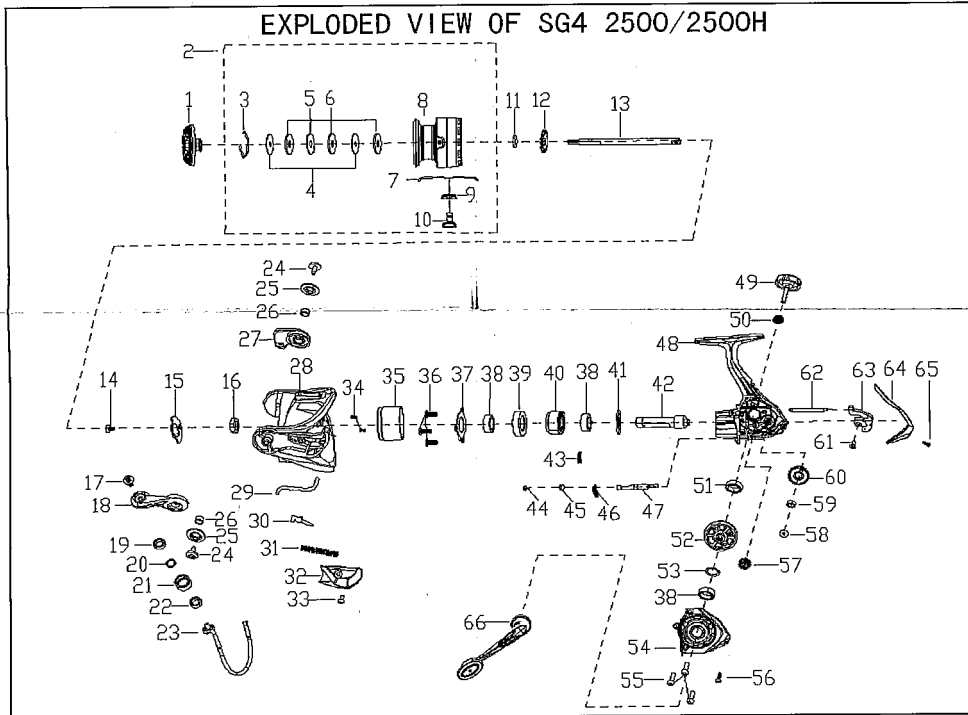


SAVAGE

GEAR *it's a savage world*



EXPLODED VIEW OF SG4 2500-2500H

ITEM#	PARTS DESCRIPTION	PARTS NUMBER	ITEM#	PARTS DESCRIPTION	PARTS NUMBER
1	Drag Knob Assembly	1587982	35	Body Head Cover	1587855
2	Spool Assembly	1587983	36	Screw(3pcs)	1587966
3	Washer Retaining Ring	1587839	37	Ball Bearing Retainer	1587857
4	Keyed Washer(2pcs)	1587840	38	Bearing(3pcs)	1587997
5	Ear Washer	1587841	39	Bearing Holder	1587859
6	Washer(3pcs)	1587842	40	Clutch Assembly	1587998
7	Spring	1587844	41	Washer	1587999
8	Spool	1588046	42	Pinion(gear ratio 6.2)	1588000
9	Line Clip Pad	1587781	42	Pinion(gear ratio 5.2)	1588001
10	Line Clip	1587778	43	Clutch Spring	1587817
11	Spool Adjust Washer	1587985	44	Screw	1587816
12	Click Gear	1587986	45	Pom Bushing	1587818
13	Main Shaft	1587987	46	Clutch Switch Spring	1587864
14	Screw	1587988	47	Clutch Switch	1587865
15	Rotor Nut Set Plate	1587989	48	Body Assembly	1588002
16	Rotor Nut	1587847	49	Handle Cap	1588003
17	Screw	1587797	50	Washer	1588004
18	Bail Arm	1587990	51	Bearing	1588005
19	Bushing	1587927	52	Driver Gear(gear ratio 6.2)	1588006
20	Washer	1587961	52	Driver Gear(gear ratio 5.2)	1588007
21	Line Roller	1587962	53	Washer	1588008
22	Bearing	1587960	54	Body Cover Assembly	1588009
23	Bail Assembly	1587991	55	Screw(3pcs)	1587808
24	Screw(2pcs)	1587956	56	Screw	1587906
25	Screw Cap(2pcs)	1587957	57	Reduction Gear	1588010
26	Bushing(2pcs)	1587794	58	Screw	1587873
27	Bail Holder	1587992	59	Bearing	1588045
28	Rotor	1587993	60	Oscillation Gear	1588011
29	Rotor Trip Lever	1587994	61	Screw	1587831
30	Pivot Arm	1587806	62	Slider Guide Shaft	1587832
31	Spring	1587807	63	Slider	1587830
32	Bail Arm Cover	1587995	64	Body Rear Cover	1588012
33	Screw	1587804	65	Screw	1587822
34	Screw(2pcs)	1587996	66	Handle Assembly	1588013

